

# TeAM NBS Hub Launch

Budapest, Hungary

October 18, 2022

- [Anna Bruen](#), Officer, Sustainable Resources, Climate, and Resilience, ICLEI Europe





# Nature-based Solutions

**IUCN,**  
2016

“Nature-based Solutions are actions to protect, sustainably manage, and restore natural and modified ecosystems that address societal challenges effectively and adaptively, simultaneously benefiting people and nature.”

**European  
Commission,**  
2015

“Solutions that are inspired and supported by nature, which are cost-effective, simultaneously provide environmental, social and economic benefits and help build resilience. Such solutions bring more, and more diverse, nature and natural features and processes into cities, landscapes and seascapes, through locally adapted, resource-efficient and systemic interventions. Nature-based solutions must therefore benefit biodiversity and support the delivery of a range of ecosystem services.”

**UNEA,**  
2022

“NBS are actions to protect, conserve, restore, sustainably use and manage natural or modified terrestrial, freshwater, coastal and marine ecosystems, which address social, economic and environmental challenges effectively and adaptively, while simultaneously providing human well-being, ecosystem services and resilience and biodiversity benefits. The resolution further states that nature-based solutions respect social and environmental safeguards.”



# Work with Nature-based Solutions



Network  
Nature

## NBS addressing multiple challenges...



Biodiversity  
enhancement



Water  
management



Green space  
management



Climate resilience



Air quality



Coastal  
resilience



Urban  
regeneration



Health and  
well-being



Participatory planning  
and governance



Social justice and  
social cohesion



Knowledge building for  
sustainable urban  
transformation



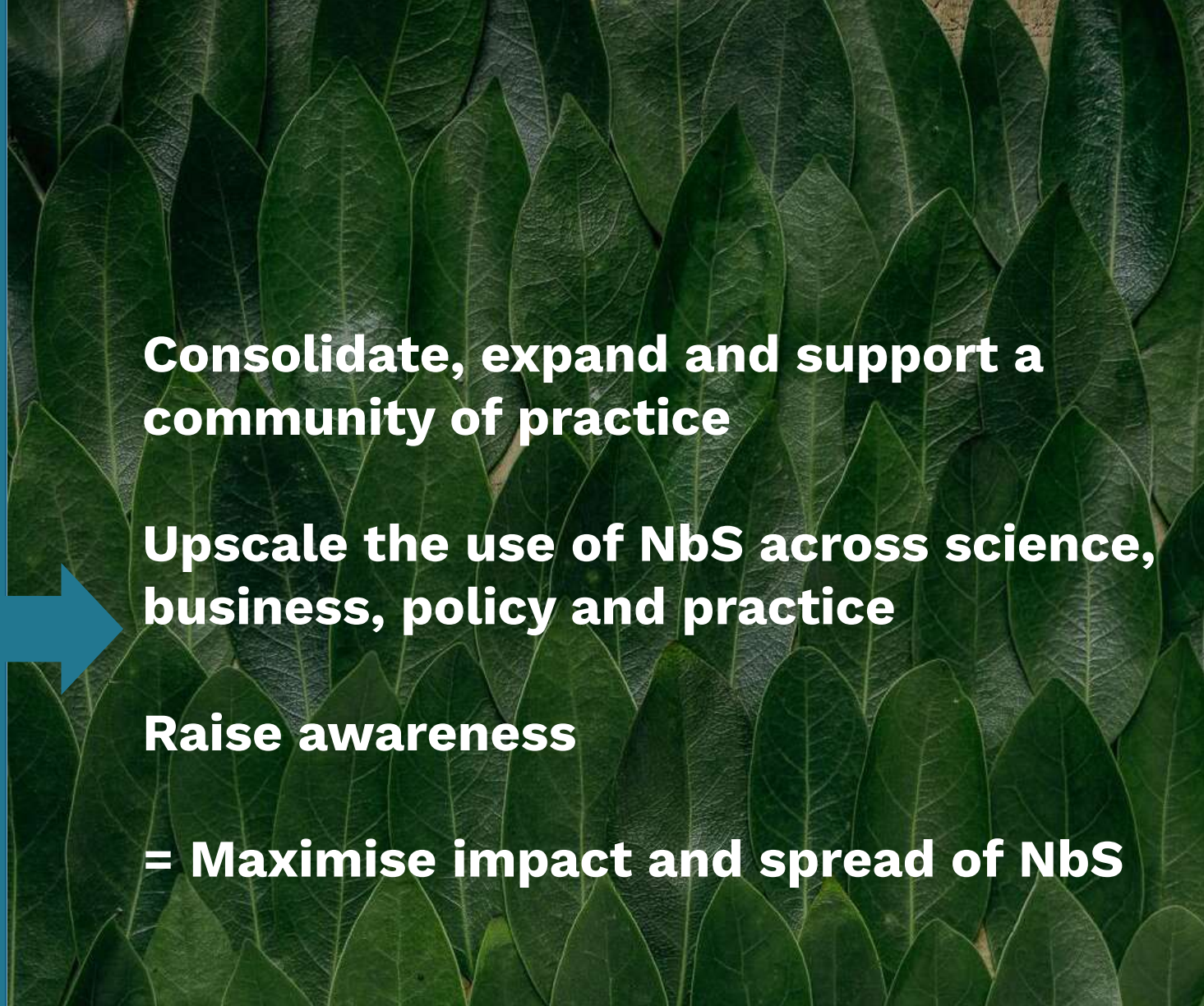
New economic  
opportunities and  
green jobs



Network  
Nature

**Gathers resources,  
projects, best  
practices and tools in  
one place to support  
the nature-based  
solutions community**

**[networknature.eu](http://networknature.eu)**



**Consolidate, expand and support a  
community of practice**

**Upscale the use of NbS across science,  
business, policy and practice**

**Raise awareness**

**= Maximise impact and spread of NbS**

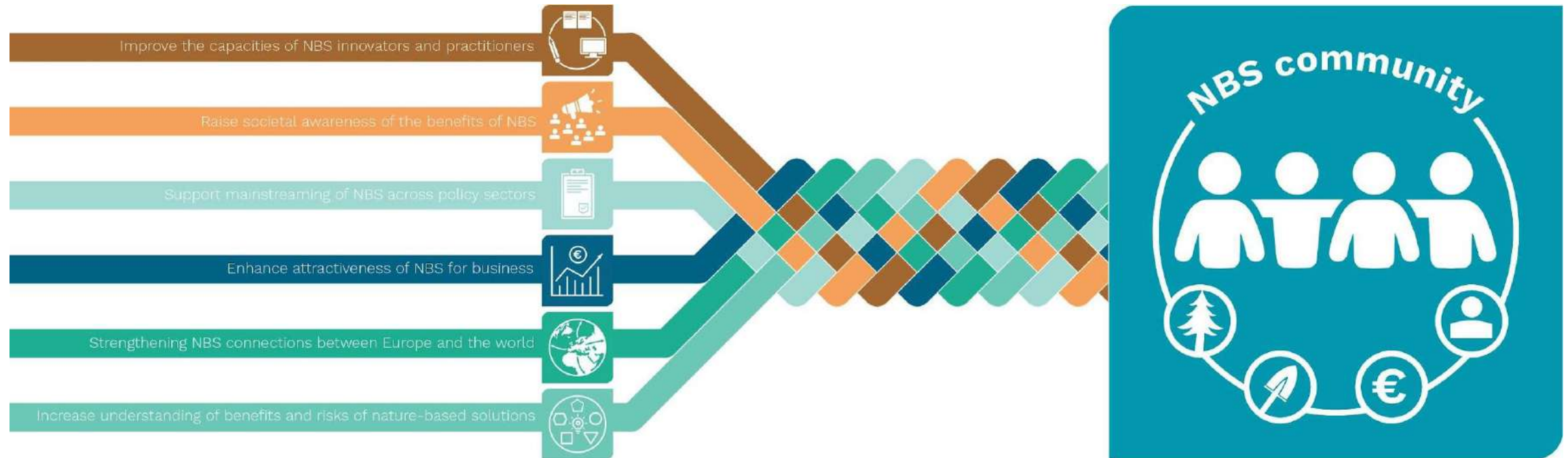




NetworkNature will **engage stakeholders and expand the NBS community** to new sectors, by identifying sectoral champions, sharing knowledge in dialogue events and disseminating guidance material.



NetworkNature will **raise awareness of NBS with the wider public** by identifying sectoral champions in NBS hubs, fostering local action through operational fund and promoting the use of educational materials.



NetworkNature **synthesizes & strengthens the NBS evidence base and identifies knowledge gaps** by gathering experiences, knowledge, tools and services from **over 30 Horizon 2020** projects.



NetworkNature will **support the NBS policy agenda** and **ensure NBS science and practice informs the policy agenda** across levels. The platform is a bridge between the European policy landscape and the NBS community.

# NetworkNature's 4 Key Target Audiences

## **Natural resources management**

Managers, public and private owners, civil society organisations, etc.;

## **Infrastructure planning & implementation**

Urban and regional planners, developers/landowners, engineers, companies providing construction products and services;

## **Finance and investment**

Finance institutions, insurance companies, investors;

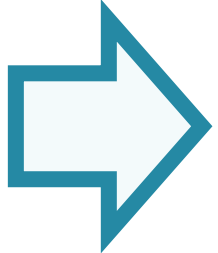
## **General public**

including schools, universities, civil society networks, community champions;

*Practitioners, policymakers, businesses, researchers*



# NbS Cluster Taskforces



H2020 NbS projects and future Horizon Europe NbS projects work on several key transversal topic areas, with different approaches and outputs.

## CLIMATE AND WATER RESILIENCE

- Connecting Nature
- Grow Green
- Urban GreenUP
- UNaLab

## INCLUSIVE URBAN REGENERATION

- CLEVER Cities
- EdiCiNet
- ProGReg
- URBINAT

## INSURANCE VALUE OF ECOSYSTEMS

- NAIAD

## INTERNATIONAL RESTORATION AND REHABILITATION OF URBAN ECOSYSTEMS

- CLEARING HOUSE (EU-CHINA)
- REGREEN (EU-CHINA)
- CONEXUS (EU-CELAC)
- INTERLACE (EU-CELAC)

## NEW NBS GOVERNANCE, BUSINESS, FINANCING MODELS AND ECONOMIC IMPACT ASSESSMENT TOOLS

- NATURVATION
- NATURE4CITIES

## HYDRO-METEOROLOGICAL RISK REDUCTION

- OPERANDUM
- PHUSICOS
- RECONNECT
- INTER-RELATIONS BETWEEN CLIMATE CHANGE, BIODIVERSITY AND ECOSYSTEM SERVICES

- DRYVER
- FutureMARES
- MaCoBioS
- PONDERFUL

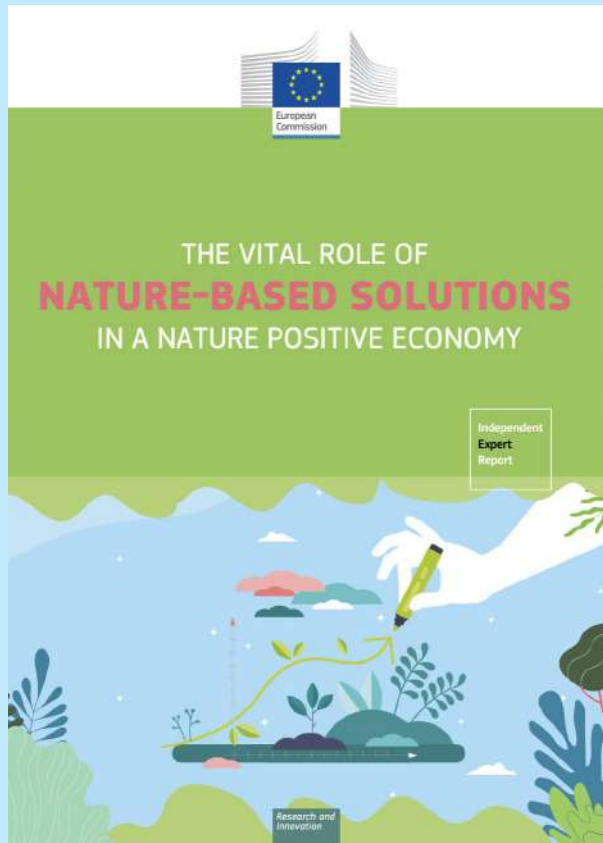
## IMPROVE WELL-BEING AND HEALTH

- EUPOLIS
- GO GREEN ROUTES
- IN-HABIT
- VARCITIES

## NBS MULTI-STAKEHOLDER DIALOGUE PLATFORM

- Think Nature
- Network Nature
- ECOSYSTEM RESTORATION
- AMBER
- MERCES





## Authors:

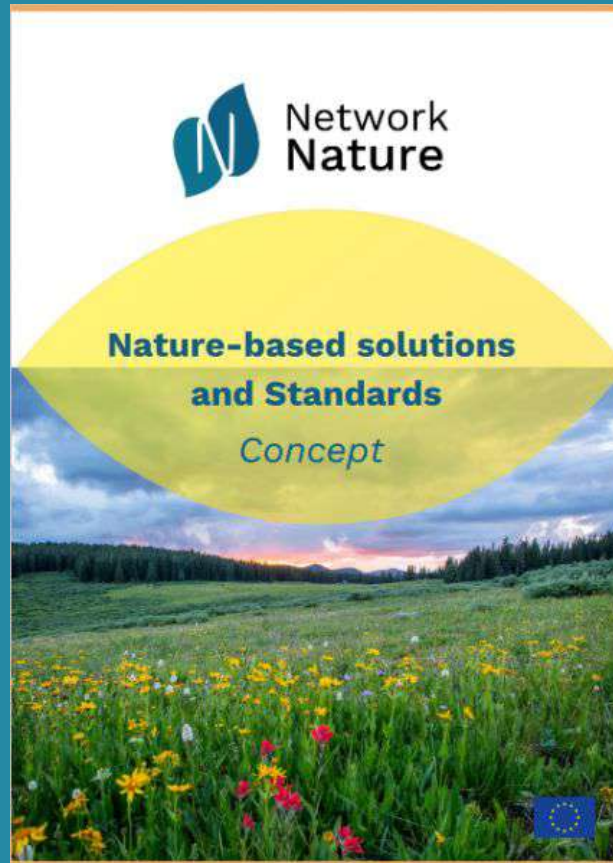
Siobhan McQuaid, Esmee Kooijman, Daniela Rizzi, Thomas Andersson, Joanne Schanté

## Contributions from 17 NBS projects:



And 170 respondents to the public consultation!

# NetworkNature's Semester Themes



- **Create awareness and increase knowledge**
- **Gather knowledge from various fields**
- **Spur discussion**
- **Highlight knowledge gaps and needs**



# NbS Hubs in EU Member States

## Why?

- Create **long-lasting structures for NBS uptake** and mainstreaming;
- **Foster capacity building and knowledge exchange**, based on specific opportunities and challenges in hub regions
- **Build relationships** between national/regional/local partners; and **new partnerships for action**
- Create **nuanced understanding of benefits and risks** of NbS across climatic, geographic, ecological, political and economic contexts.

## Two types of NetworkNature Nature-based Solutions hubs:

- 1) European Regional Hub** – consisting of networks and actors in a geographic region from multiple Member States with similar planning or landscape contexts
- 2) Member State Hub** – consisting of networks and actors from multiple regions within a Member State. A Member State Hub could develop into or be a participant in a European Regional Hub.

# NetworkNature Nordic Hub



## Starting Point and First Focus

- Building on momentum from research projects sponsored by the Nordic Council of Ministers in all 8 Nordic countries
- Focus on removing barriers for local politicians and administrations to implement NBS - coastal, forest, water, land, city, and Arctic

**Launched last week in Copenhagen!**

## Core partners and Stakeholders

- Nordic Council of Ministers  
Nature-based solutions programme
- Umhvørvisstovan, Environment Agency Faroe Islands
- Norwegian Institute for Water Research (NIVA)
- Aarhus University
- NordGen
- Nordic Working Group for Biological Diversity (NBM)

# Hungarian Network for Nature-based Solutions

## Természet-Alapú Megoldások Magyarországi Hálózata



**TEAM  
HUB.**

### Starting Point and First Focus

- Building on momentum from a project with DG Reform/OECD about barriers and opportunities
- Focus on urban regeneration and blue and green infrastructure
- Stimulating dialogue and cooperation between governmental, municipal, professional and civil actors for the widespread practice of nature-based solutions
- Address NBS related knowledge gaps
- Encourage EU-wide cooperation and best practices

### Core partners and Stakeholders

- BURST - Bright Urban Solutions Team
- Association of Climate Friendly Municipalities
- Grants Europe Consulting
- HBH Strategy and Development
- Steering group and advisory group members of the DG Reform funded project

# NetworkNature Portuguese Hub



## Starting Point and First Focus

- Engaging citizens and increasing the awareness and understanding NBS across all sectors
- Focus on applying NBS in coastal, urban/rural, and tourism regions

**Launching early 2023!**

## Core partners and Stakeholders

- GUDA- Portuguese Consortium  
Member of URBINAT H2020 Project
- DOMUS Social (housing experts)
- BIOPÓLIS - (Biology, ecosystem research and agrodiversity)
- U. COIMBRA (Architectural design)
- Oporto Municipality
- Portimao Municipality

# UrbanByNature NBS Hubs - in Europe and beyond!



Flanders Hub, Genk, Belgium



Southeastern Europe



Caucasus Hub



Scottish Hub, Glasgow



Spanish Hub, A Coruna



- Brasil
- Korea
- China
- Latin America





# UrbanByNature

- Capacity building programme
- Local collective action on NBS through regional NBS hubs an (9 active hubs)
- Tools and approaches for NBS available to the hub communities (1000+ registrants from +100 countries with +70 published videos (almost 10,000 clicks))



<https://urbanbynature.eu/>



- Officially recognized by Secretariat on the Convention of Biological Diversity as the city registry
- Shared platform for cities and their partners to engage, connect, and share policies, programmes and commitments focused on nature and ecosystem services

<https://citieswithnature.org/>



# NbS Hubs in EU Member States



## NetworkNature offers:

- Individualised support, tailored to the needs of each hub
- One-on-one support setting up and launching a hub
- Advice on communication and outreach campaigns
- Strategic support in organising events and exchange opportunities
- Networking and connection with an extensive network of experts from different disciplines and sectors
- Custom profile on the NetworkNature web platform

## Hubs committ to:

- Organising and hosting a 'launch' event
- Fostering multi-level, vertical, collaboration between cities, regions, and national governments
- Providing peer-to-peer learning opportunities
- Seeking long-term sustainability of the hub
- Sharing insights, reports, case studies, guidance and other documents on NbS with NetworkNature
- Involving the general public in NbS actions
- Participate in NetworkNature events



# NetworkNature Partners



Capacity building, strategic support, policy consultation, planning for NBS

Technical support on the NetworNature platform

Strategic support, policy consultation, working across policy sectors

NBS Roadmap Consultation and connections to work on biodiversity

Engaging the private sector and growing the business case for NBS including the Network of National Representatives



# ICLEI AROUND THE WORLD

SERVING OUR NETWORK FROM 17 OFFICES AROUND THE WORLD



Project Office  
 Country Office  
 Secretariat office

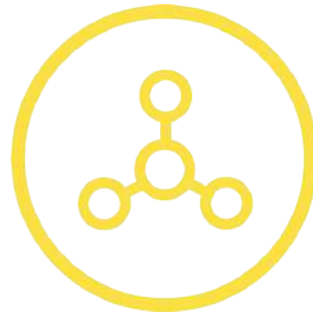
# THE FIVE ICLEI PATHWAYS



LOW EMISSION  
DEVELOPMENT



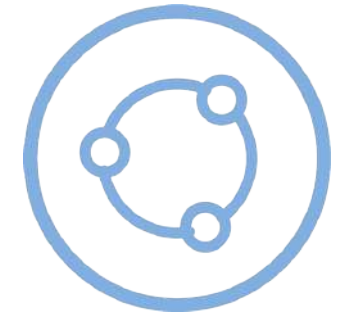
NATURE-BASED  
DEVELOPMENT



EQUITABLE AND  
PEOPLE CENTERED  
DEVELOPMENT



RESILIENT  
DEVELOPMENT



CIRCULAR  
DEVELOPMENT

The **FIVE ICLEI PATHWAYS** reflect ICLEI's approach to achieving a sustainable city as well as local contributions to implementing the goals laid out in international frameworks such as the Sustainable Development Goals. Any of our individual projects or initiatives can be oriented along one or more specific pathways. We also look at how the pathways connect to bring about change in an **INTEGRATED** way. For example, we consider how nature-based development contributes to resilience, or how to bring equity into low emission development.

# More resources

> Home

## Nature-based solutions resources



### Green Infrastructure and Public Health

The Green Infrastructure Strategy proposed by the European Commission, promotes the development of Green Infrastructure across the EU delivering economic, social and ecological benefits and contributing to sustainable growth. It guides the implementation of Green Infrastructure at EU,

ENGLISH

MORE

Enter search terms:

GO

RESOURCE TYPE >

SCALE >

LICENSE >

SEMESTER 1: HEALTH >

SEMESTER 2: ECOSYSTEM RESTORATION >

AUDIENCE >

SECTOR >

OTHER TAGS >

APPLY

RESET

+ SHARE / ADD RESOURCE

HOW TO ADD RESOURCES - VIDEO

- Access to a large network of NBS professionals
- Improved filters for enhanced search
- NbS project tags



NEWS

## Help shape the NBS R&I Roadmap for Europe!

6 October 2022

How can Research & Innovation help achieve EU goals for NBS development and deployment? Have your say and help shape the European Research & Innovation Roadmap for Nature-based solutions.

NetworkNature is facilitating the

NEWS



### Don't miss this EWRC workshop on EU Nature Restoration Law

4 October 2022

The 20th edition of the European Week of Regions and Cities (EWRC), the biggest annual Brussels-...

NEWS



### Three cities chosen for CLEARINGHOUSE exchange and peer support for urban forests as nature-based solutions

27 September 2022

What do Belo Horizonte, Bogotá and Mexico City have in common, apart from being vibrant...

NEWS



### Introducing the NetworkNature Nordic hub

26 September 2022

The NetworkNature Nordic hub launch is fast approaching. On 13 October, the Nordic hub will...



- [Networknature.eu](https://networknature.eu)
- ✉ [hello@networknature.eu](mailto:hello@networknature.eu)
- 🐦 [NetworkNatureEU](https://twitter.com/NetworkNatureEU)
- 🌐 [NetworkNature](https://www.linkedin.com/company/networknature)
- 📺 [NetworkNature](https://www.youtube.com/channel/UC...)



# Network Nature

*Pooling resources for the  
nature-based solutions  
community*



This project has received funding from the European Union's Horizon 2020 research and innovation programme under grant agreement No. 887396.

The sole responsibility for any error or omissions lies with the editor. The content does not necessarily reflect the opinion of the European Commission. The European Commission is also not responsible for any use that may be made of the information contained herein.

# ABOUT ICLEI



ICLEI - Local Governments for Sustainability is a global network of more than **1,750 local and regional governments** committed to **sustainable urban development**.

Active in 100+ countries, we influence sustainability policy and drive local action for low emission, nature-based, equitable, resilient and circular development.

Our Members and team of experts work together through peer exchange, partnerships and capacity building to create systemic change for urban sustainability.

**1750+** LOCAL  
AND REGIONAL  
GOVERNMENTS

**22** OFFICES  
WORLDWIDE

**ACTIVE IN**  
**100+** COUNTRIES

IMPACTING MORE THAN  
**25%** OF THE  
GLOBAL URBAN POPULATION

AND MORE THAN  
**20%** OF THE  
GLOBAL URBAN POPULATION

**5** INTERCONNECTED  
DEVELOPMENT  
PATHWAYS